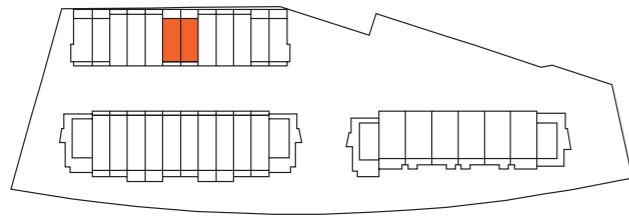


IVES

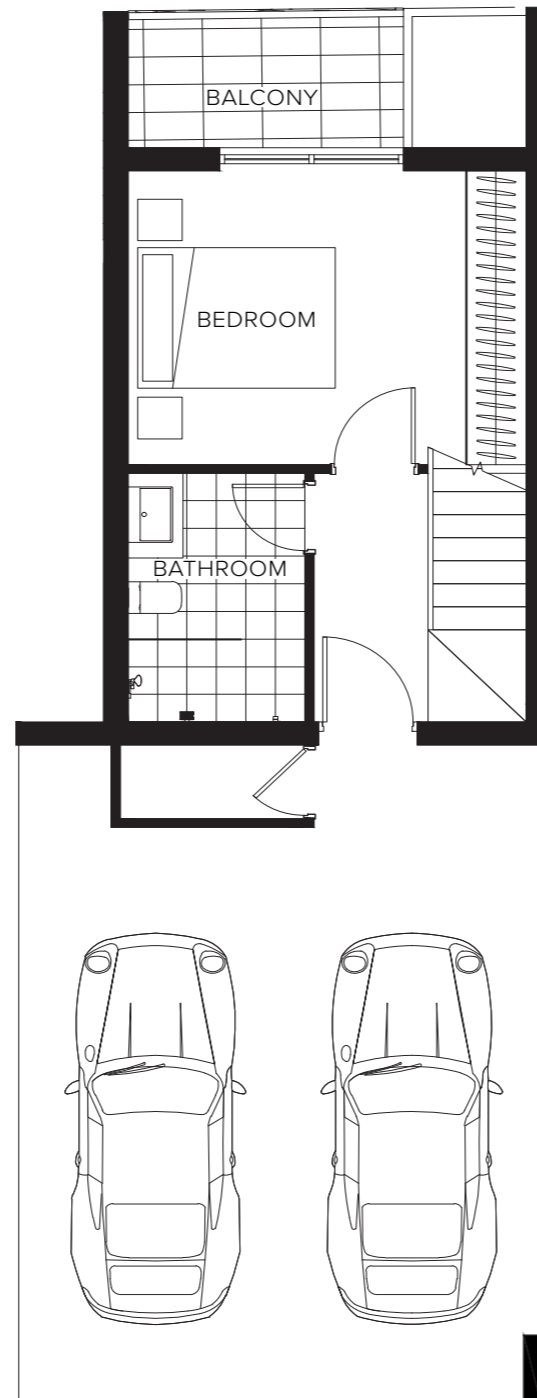
2B-1

Bedrooms	2
Bathrooms	2
Car Spaces	2
Living	109m ²
Courtyard	11m ²
Balcony	13m ²
Garage	-
Total	133m²
Units	27
Mirrored	26

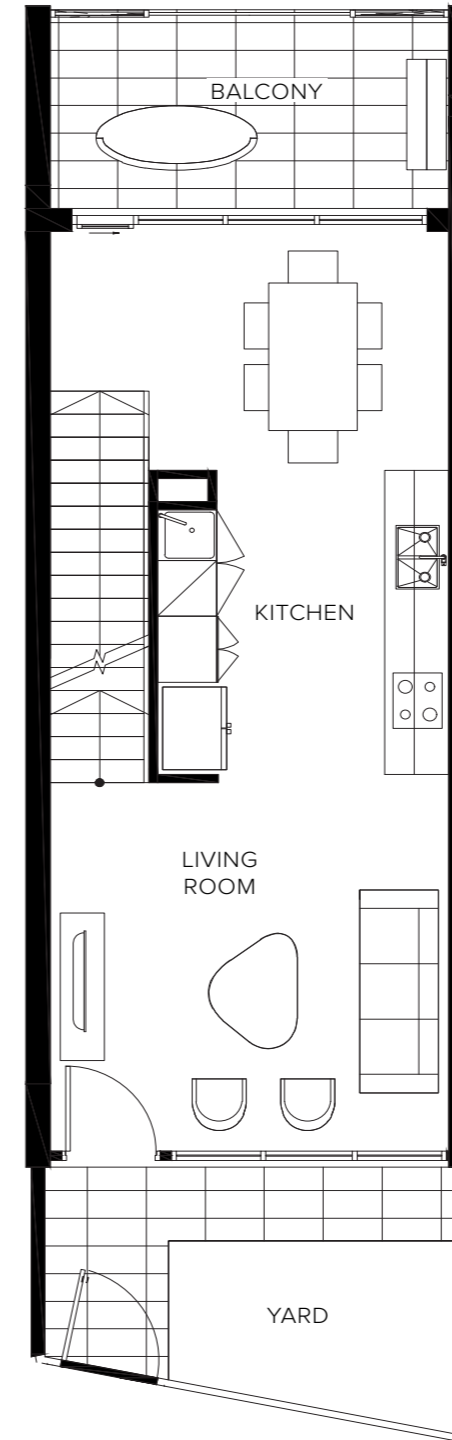


ives.tpdynamics.com.au

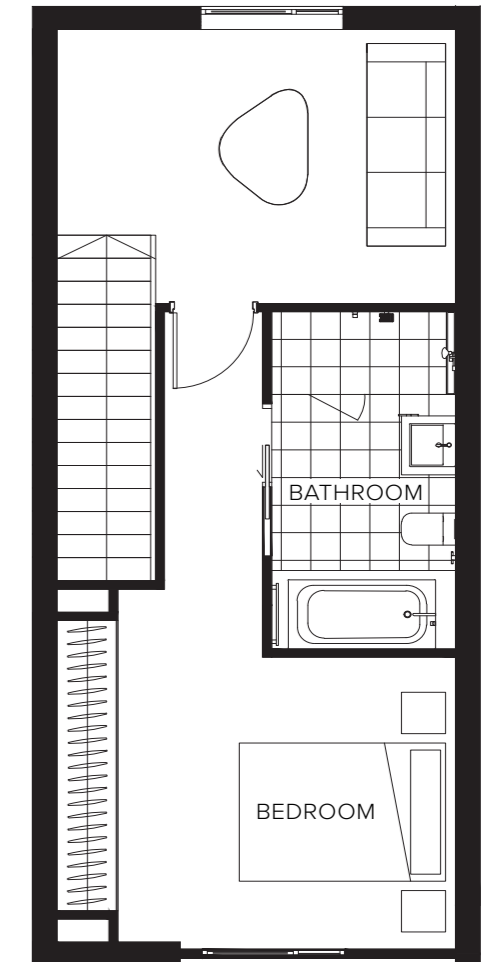
This layout may be subject to minor amendments and dimensional changes to suit final working drawings and grid layouts. dimensions shown are to structural faces. gross floor area (gfa) is measured to the outside face of external and corridor walls, to the centre line of party walls and includes riser shafts and vertical service ducts. 'balcony area' or 'terrace area' is measured to the centre line of party walls and to the outside surface of external walls/balustrade.



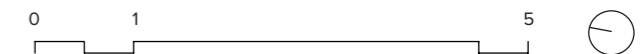
LOWER GROUND



GROUND



LEVEL 1



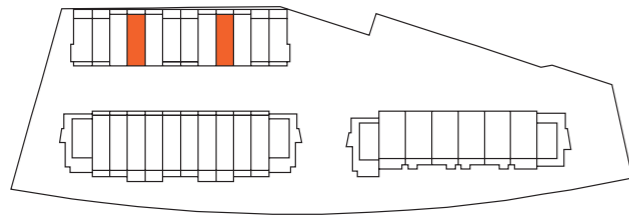
IVES

2B-2i

Bedrooms	2
Bathrooms	2.5
Car Spaces	2
Living	114m ²
Courtyard / Balcony	11m ²
Courtyard / Balcony	19m ²
Garage	-

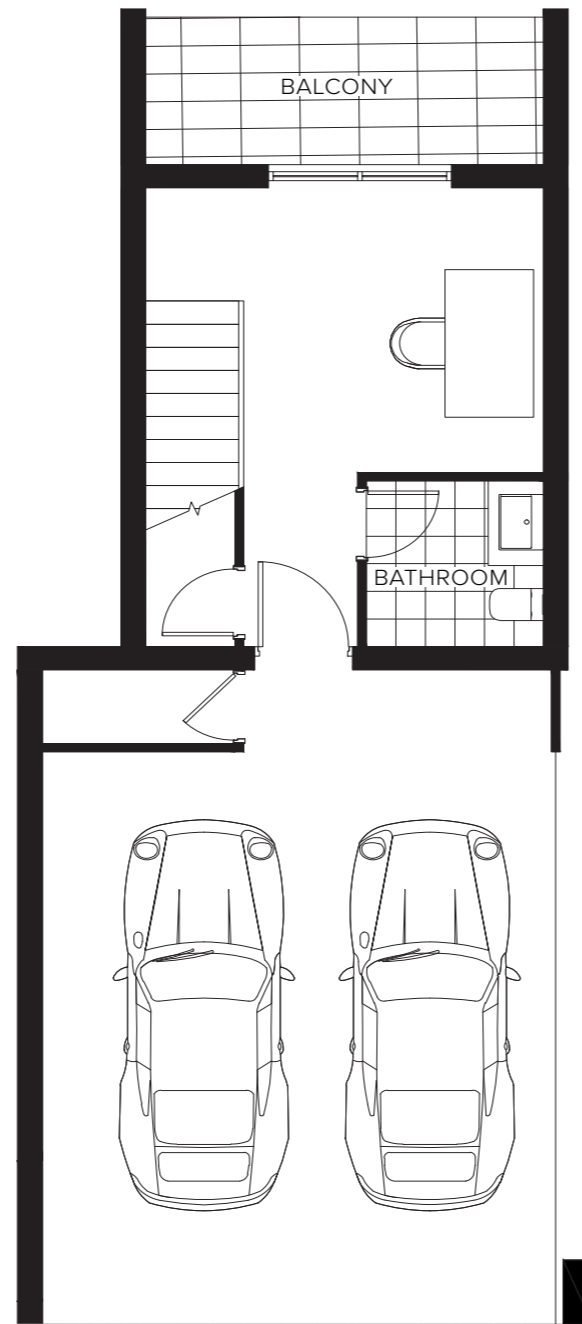
Total 144m²

Units	24
Mirrored	29

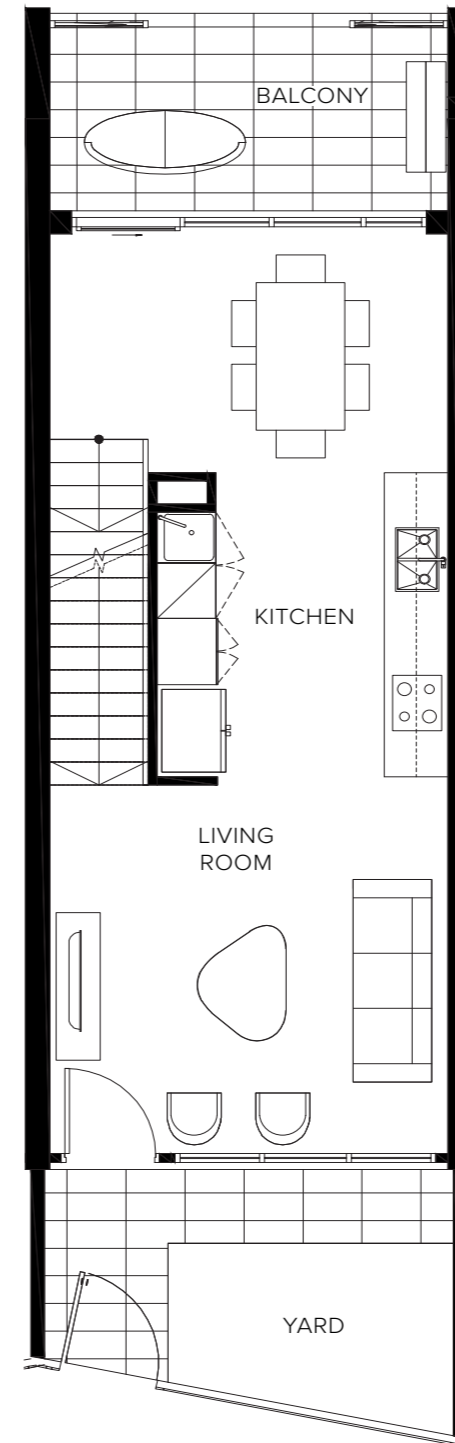


ives.tpdynamics.com.au

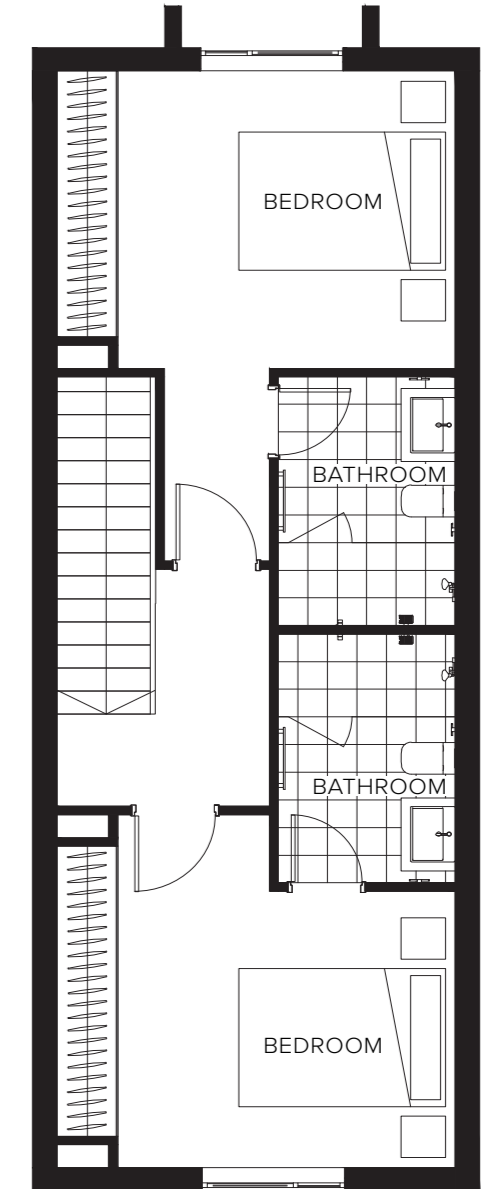
This layout may be subject to minor amendments and dimensional changes to suit final working drawings and grid layouts. dimensions shown are to structural faces. gross floor area (gfa) is measured to the outside face of external and corridor walls, to the centre line of party walls and includes riser shafts and vertical service ducts. 'balcony area' or 'terrace area' is measured to the centre line of party walls and to the outside surface of external walls/balustrade.



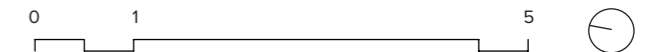
LOWER GROUND



GROUND



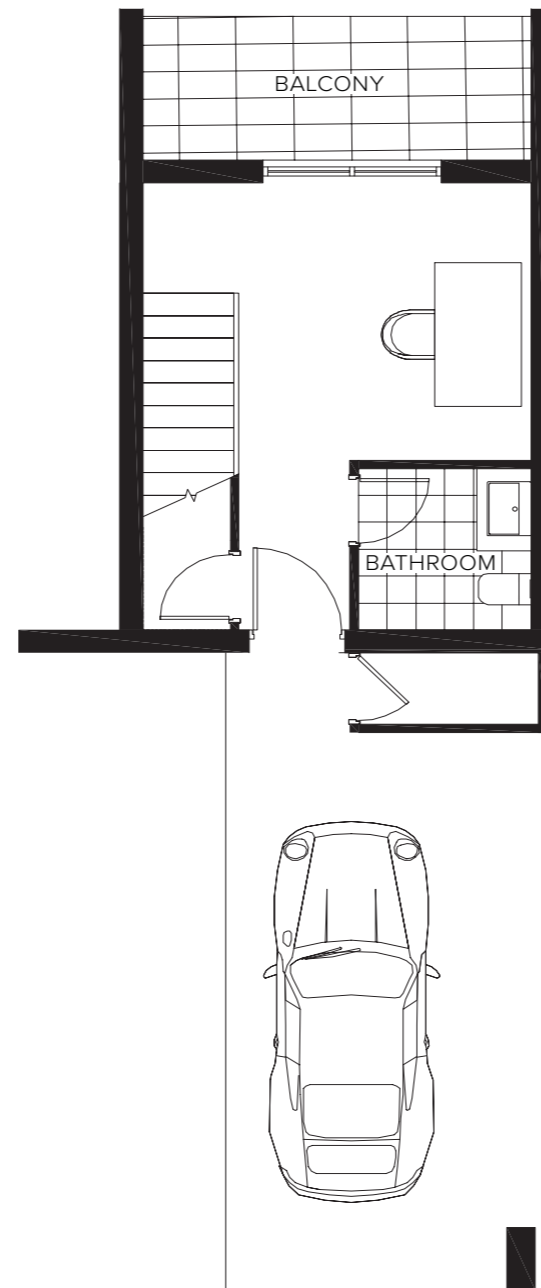
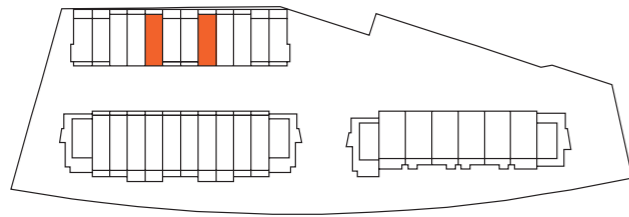
LEVEL 1



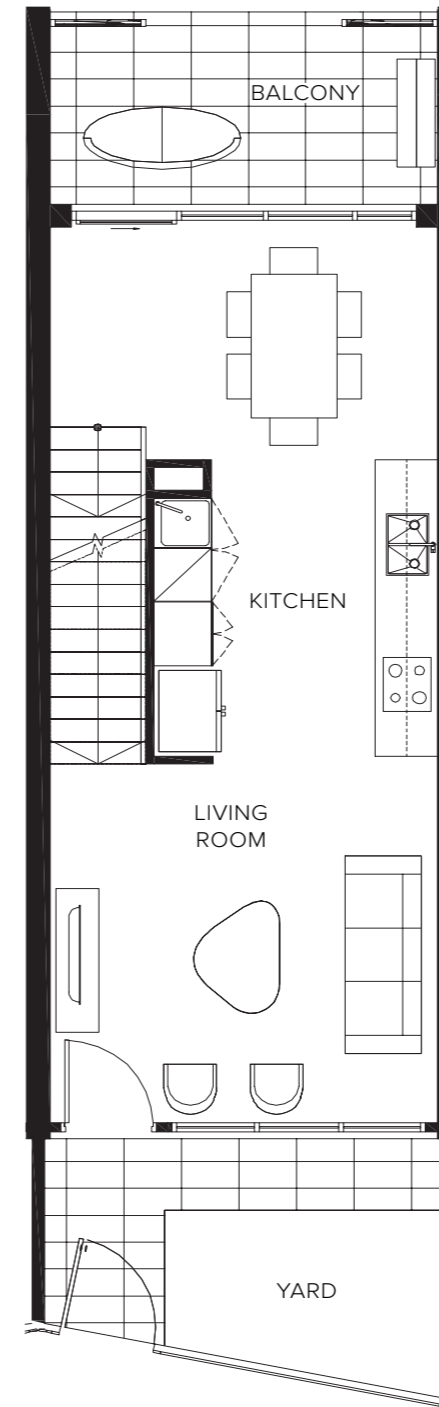
IVES

2B-2ii

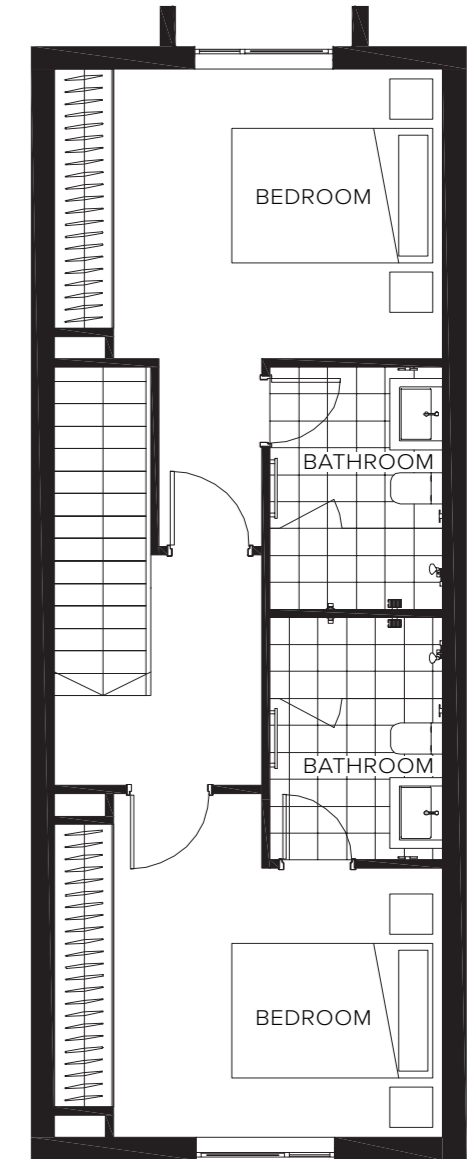
Bedrooms	2
Bathrooms	2.5
Car Spaces	1
Living	114m ²
Courtyard	11m ²
Balcony	19m ²
Garage	-
Total	144m²
Units	28
Mirrored	25



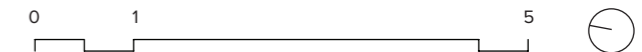
LOWER GROUND



GROUND



LEVEL 1



ives.tpdynamics.com.au

This layout may be subject to minor amendments and dimensional changes to suit final working drawings and grid layouts. Dimensions shown are to structural faces. Gross floor area (gfa) is measured to the outside face of external and corridor walls, to the centre line of party walls and includes riser shafts and vertical service ducts. 'balcony area' or 'terrace area' is measured to the centre line of party walls and to the outside surface of external walls/balustrade.

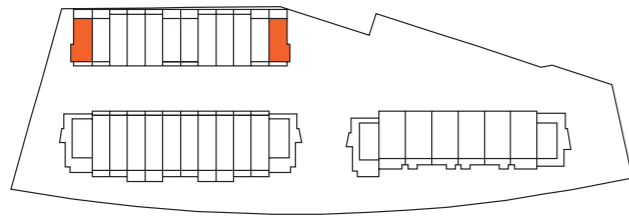
IVES

2B-3

Bedrooms	2
Bathrooms	2
Car Spaces	-
Living	115m ²
Courtyard	11m ²
Balcony	13m ²
Garage	45m ²

Total 184m²

Units	21
Mirrored	32



ives.tpdynamics.com.au

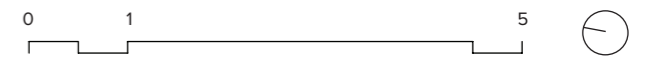
This layout may be subject to minor amendments and dimensional changes to suit final working drawings and grid layouts. dimensions shown are to structural faces. gross floor area (gfa) is measured to the outside face of external and corridor walls, to the centre line of party walls and includes riser shafts and vertical service ducts. 'balcony area' or 'terrace area' is measured to the centre line of party walls and to the outside surface of external walls/balustrade.



LOWER GROUND

GROUND

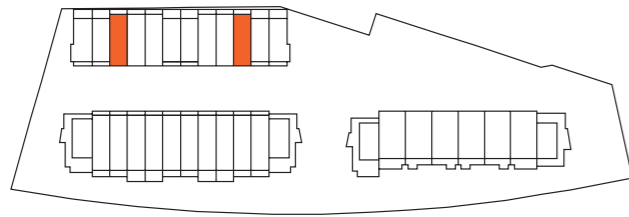
LEVEL 1



IVES

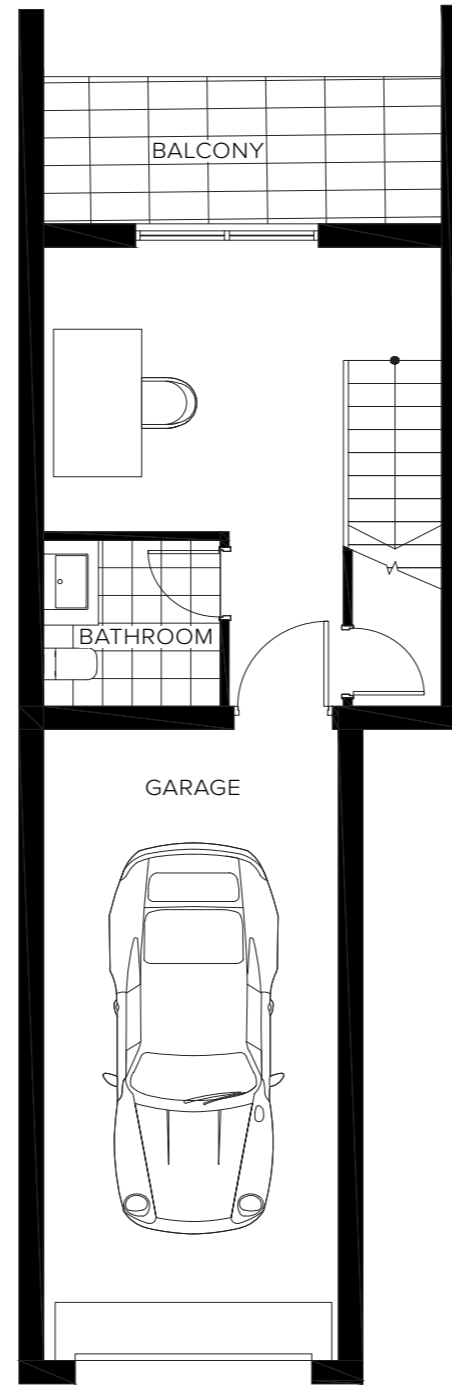
2B-4

Bedrooms	2
Bathrooms	2.5
Car Spaces	-
Living	113m ²
Courtyard	11m ²
Balcony	19m ²
Garage	24m ²
Total	167m²
Units	23
Mirrored	30

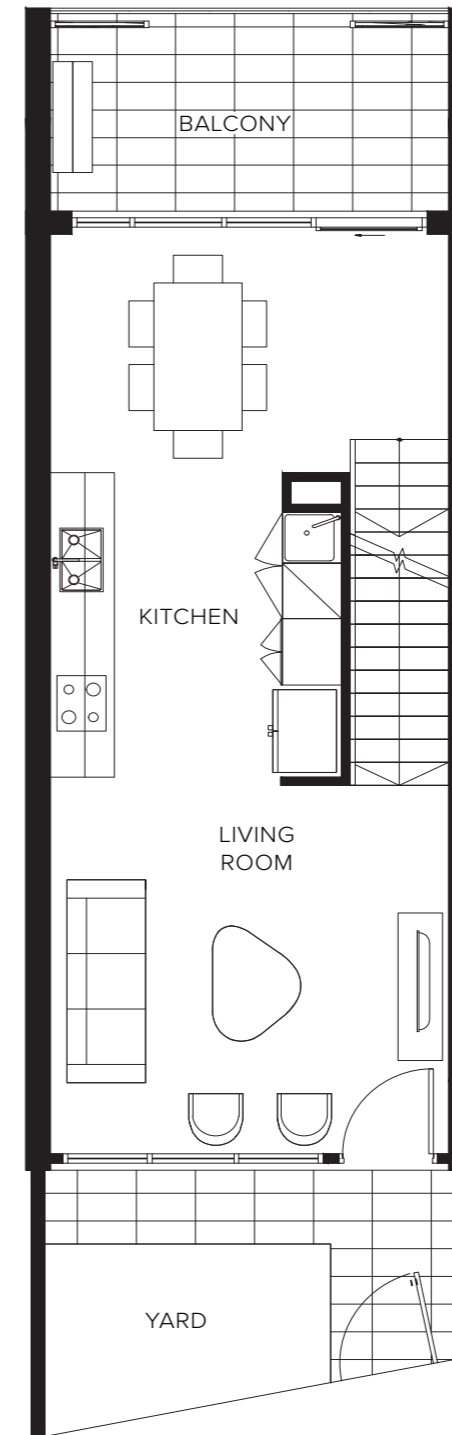


ives.tpdynamics.com.au

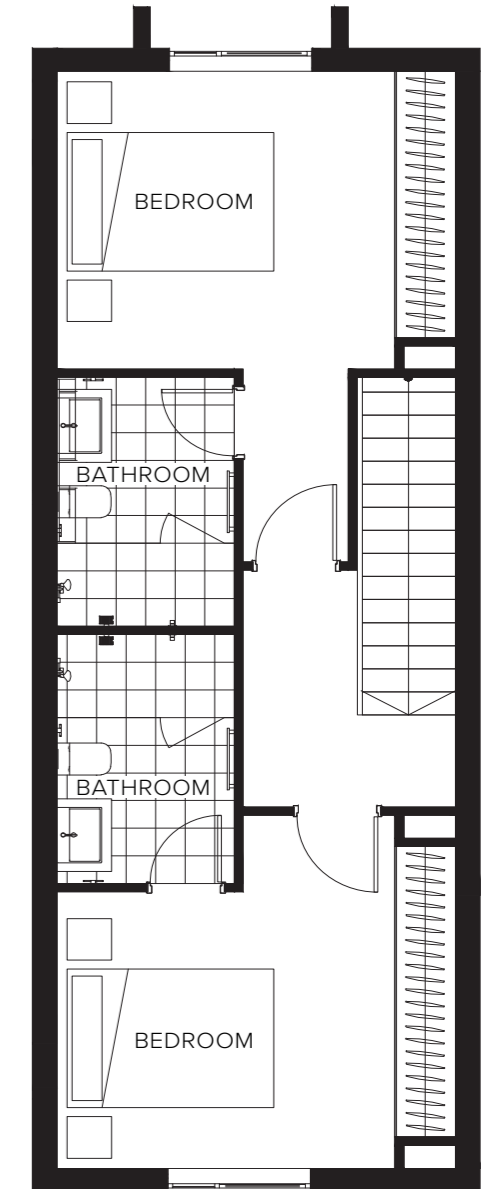
This layout may be subject to minor amendments and dimensional changes to suit final working drawings and grid layouts. Dimensions shown are to structural faces. Gross floor area (gfa) is measured to the outside face of external and corridor walls, to the centre line of party walls and includes riser shafts and vertical service ducts. 'balcony area' or 'terrace area' is measured to the centre line of party walls and to the outside surface of external walls/balustrade.



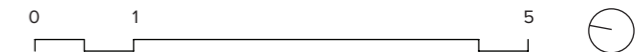
LOWER GROUND



GROUND



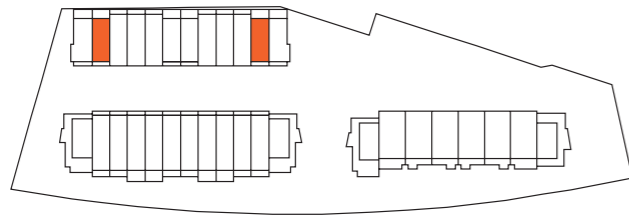
LEVEL 1



IVES

2B-5

Bedrooms	2
Bathrooms	2
Car Spaces	-
Living	108m ²
Courtyard	11m ²
Balcony	13m ²
Garage	23m ²
Total	155m²
Units	22
Mirrored	31



ives.tpdynamics.com.au

This layout may be subject to minor amendments and dimensional changes to suit final working drawings and grid layouts. dimensions shown are to structural faces. gross floor area (gfa) is measured to the outside face of external and corridor walls, to the centre line of party walls and includes riser shafts and vertical service ducts. 'balcony area' or 'terrace area' is measured to the centre line of party walls and to the outside surface of external walls/balustrade.

