

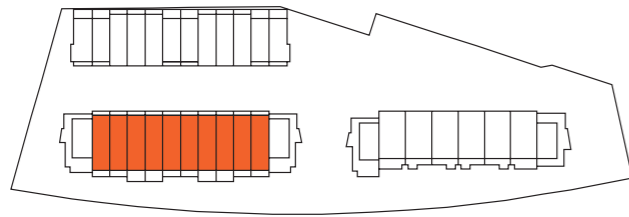
IVES

3B-1

Bedrooms	3
Bathrooms	3
Car Spaces	-
Living	140m ²
Courtyard	23m ²
Balcony	8-23m ²
Garage	45m ²

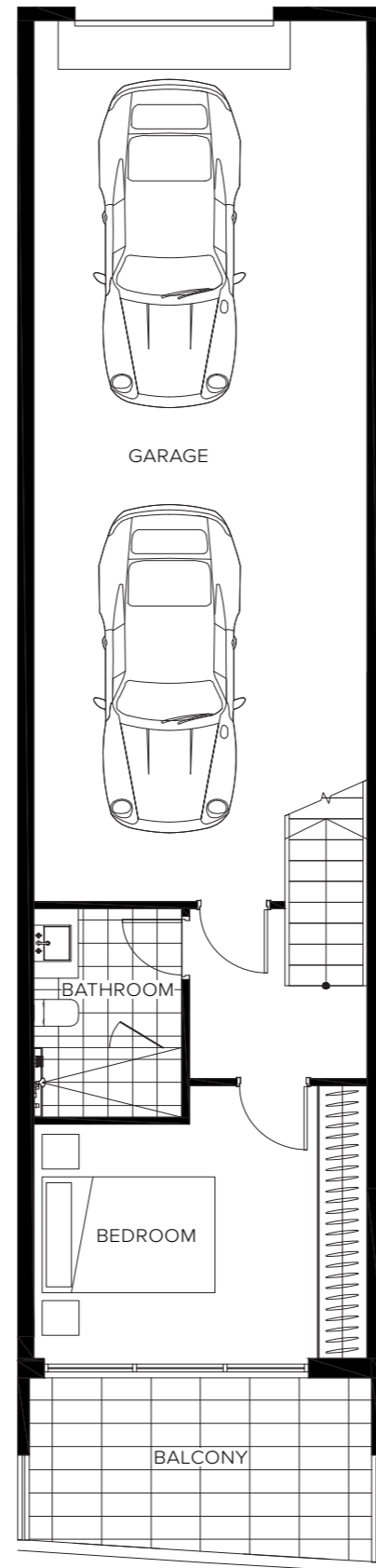
Total **216-231m²**

Units	10, 12, 14, 16, 18
Mirrored	11, 13, 15, 17, 19

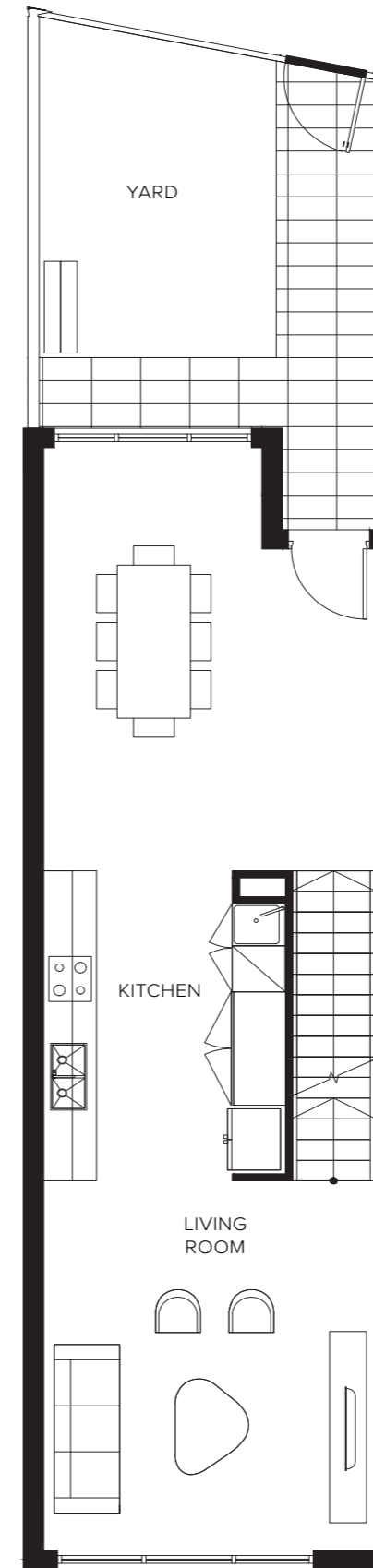


ives.tpdynamics.com.au

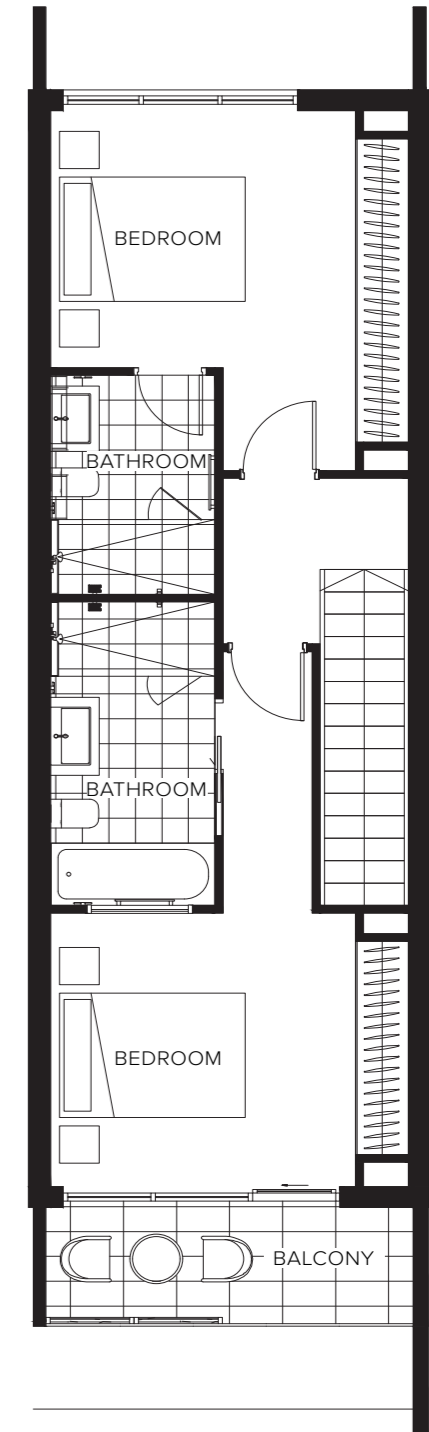
This layout may be subject to minor amendments and dimensional changes to suit final working drawings and grid layouts. dimensions shown are to structural faces. gross floor area (gfa) is measured to the outside face of external and corridor walls, to the centre line of party walls and includes riser shafts and vertical service ducts. 'balcony area' or 'terrace area' is measured to the centre line of party walls and to the outside surface of external walls/balustrade.



LOWER GROUND



GROUND



LEVEL 1

